

For Sale or Lease

Office Pad or Build to Suit

\$299,000

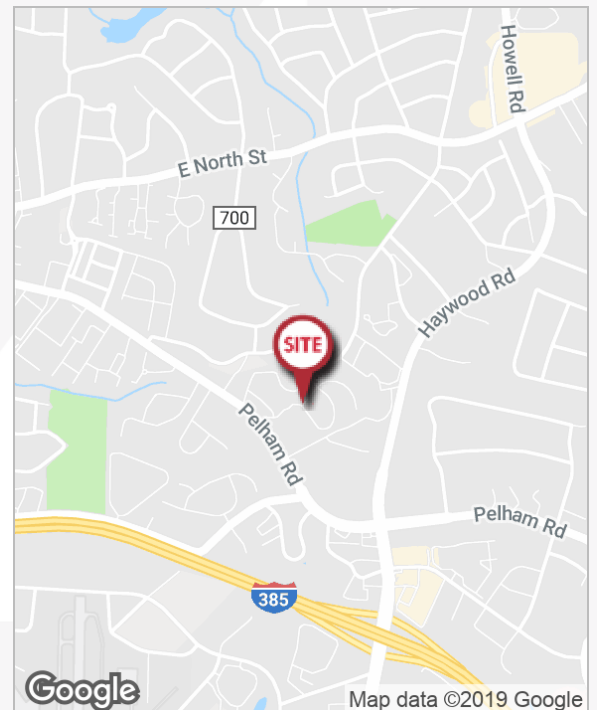


Caledon Wood Professional Park

Caledon Court
Greenville, South Carolina 29607

Property Highlights

- 0.394 acres office pad or build to suit
- 6,000 SF - 14,000 SF buildable square feet
- Single or 2 story medical/general office
- Located in Caledon Office Park
- Build to suit lease rate: \$15.00 - \$17.00/SF NNN
- Sale price: \$299,000.00



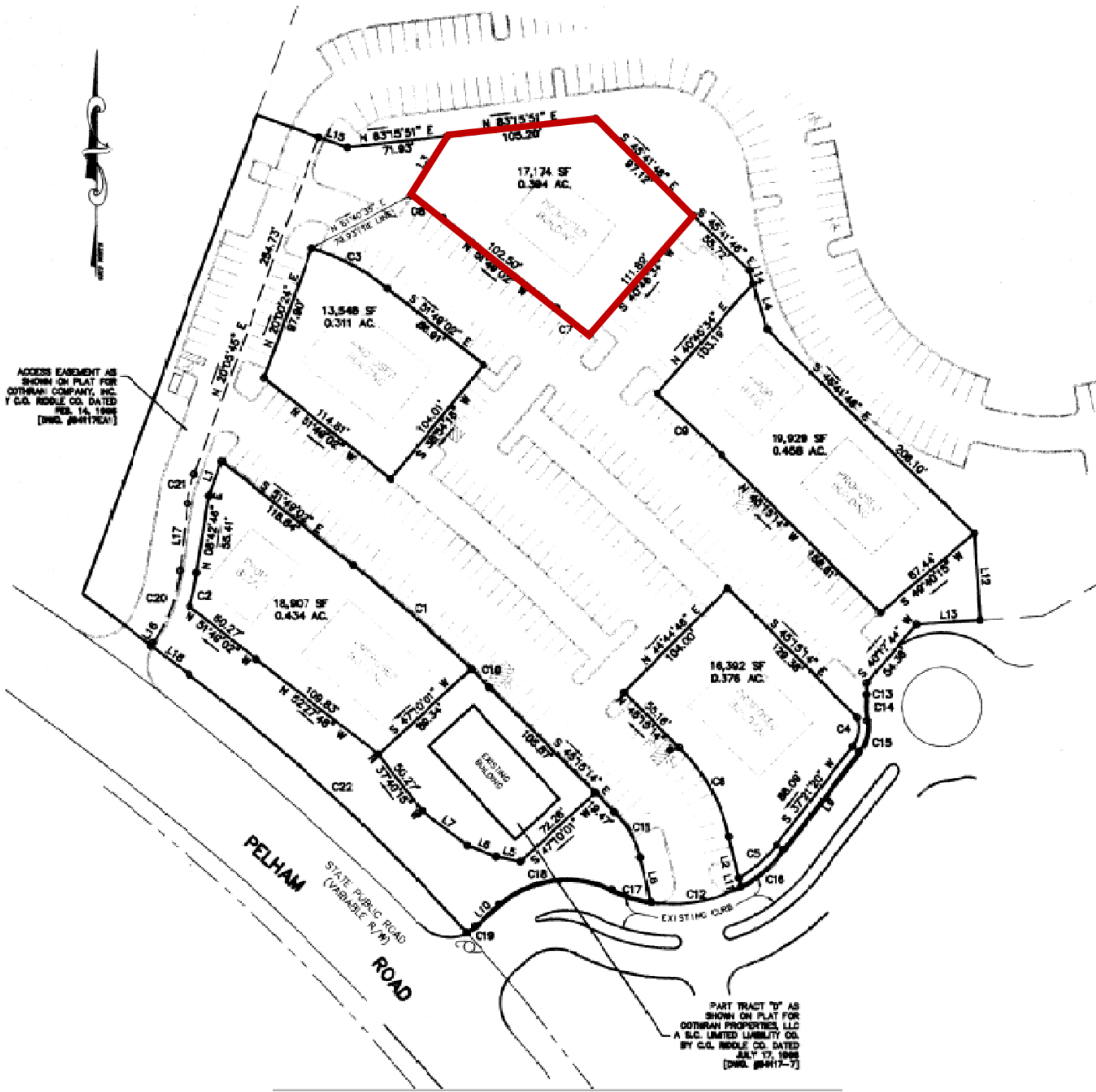
For more information

Keith Jones, CCIM, SIOR

O: 864 232 9040 | C:
keith@naiearlefurman.com

McNeil Epps

O: 864 232 9040 x5956 | C: 803 473 0179
mepps@naiearlefurman.com



ACCESS EASEMENT AS SHOWN ON PLAT FOR GOTHMAN COMPANY, INC. BY C.O. RIDDLE CO. DATED FEB. 14, 1998 (DWG. 884176A1)

PART TRACT 'D' AS SHOWN ON PLAT FOR GOTHMAN PROPERTIES, LLC A S.C. LIMITED LIABILITY CO. BY C.O. RIDDLE CO. DATED JULY 17, 1998 (DWG. 88417-7)